

**Algebra 2**  
**Section B1 Practice**

Evaluate given the functions below:

$$f(x) = 2x - 3$$

$$g(x) = x^3 + 5$$

$$h(x) = 4x^2 + 1$$

1.  $f(-4)$

2.  $h(3)$

3.  $2 + f(5)$

4.  $g(-2) - 5$

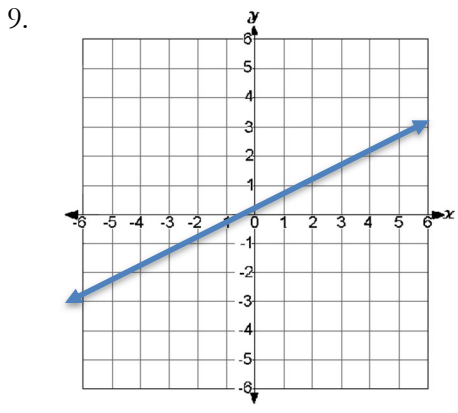
5.  $-3(g(4))$

6.  $h(-3) - 5$

7.  $2(f(-1)) + 5$

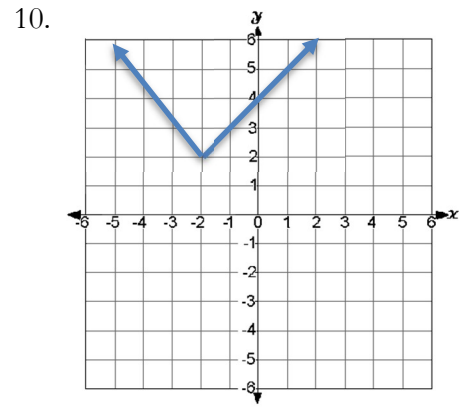
8.  $f(-2) + g(3)$

Determine the domain and range for each graph.



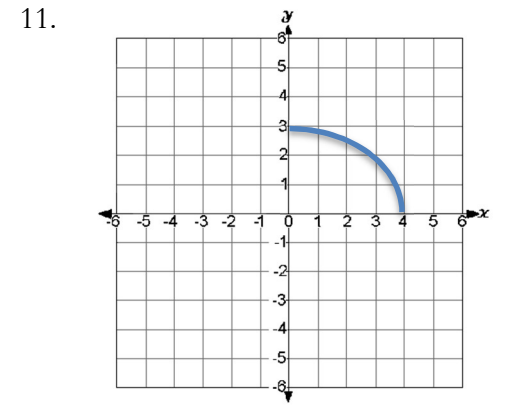
Domain:

Range:



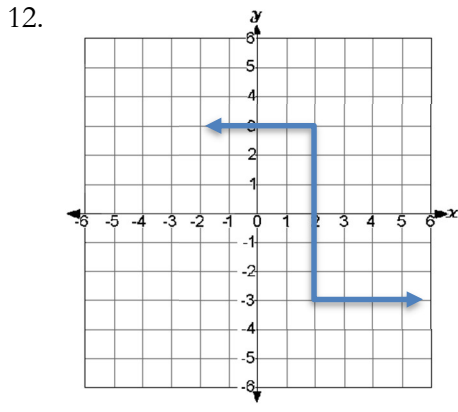
Domain:

Range:



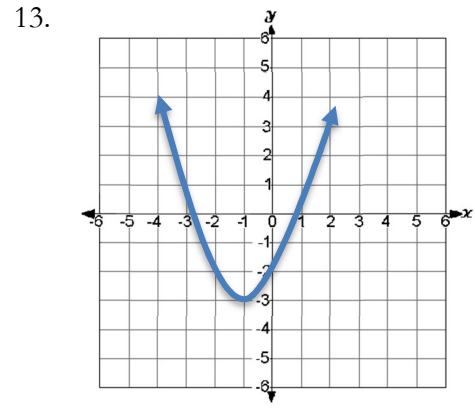
Domain:

Range:



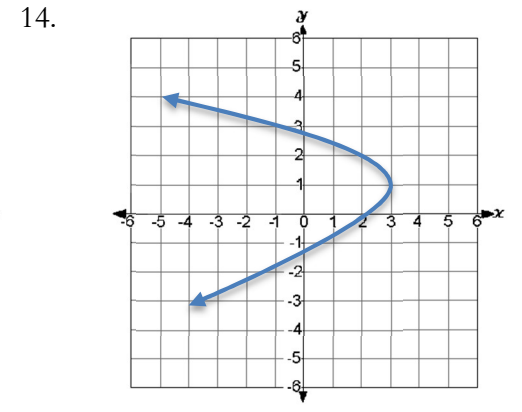
Domain:

Range:



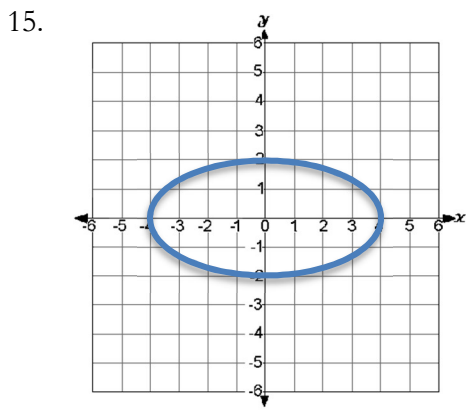
Domain:

Range:



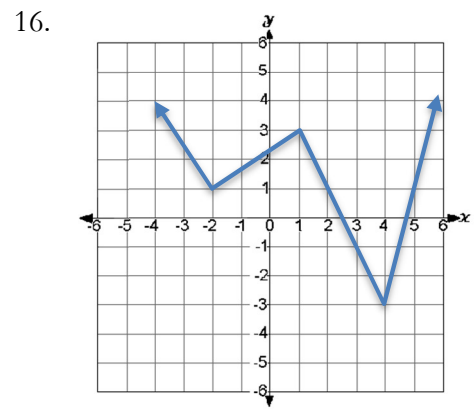
Domain:

Range:



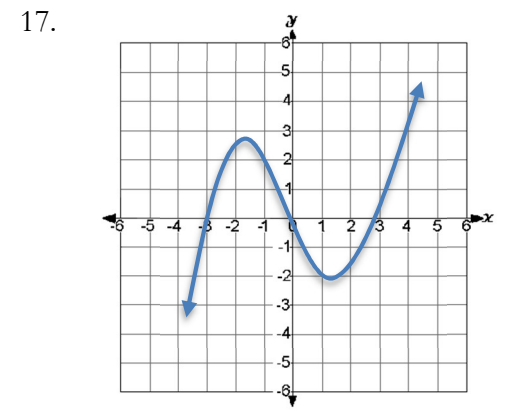
Domain:

Range:



Domain:

Range:



Domain:

Range: