

## SECTION 4.2: WRITING EQUATIONS IN POINT-SLOPE FORM

Homework: \_\_\_\_\_

### Learning Targets:

- 4a. Writing a linear function when given a graph
- 4b. Writing a linear function when given the slope and a point
- 4c. Writing a linear function when given two points

Point-Slope Form: \_\_\_\_\_

Things you plug in

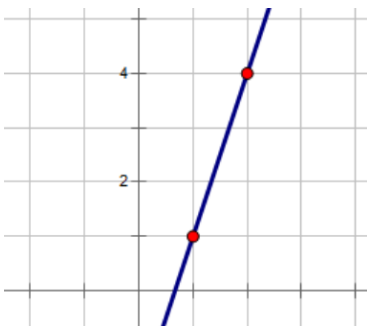
- $m$
- $x_1$
- $y_1$

Write an equation for a line given the following information.

$$m = \frac{1}{2}; (-2, 5)$$

$$(2, 3), (0, 4)$$

$$f(2) = 3, f(-2) = 1$$



$x$	-2	0	2	4
$y$	-3	-2	-1	0