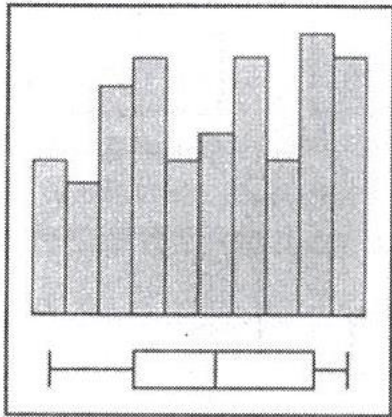


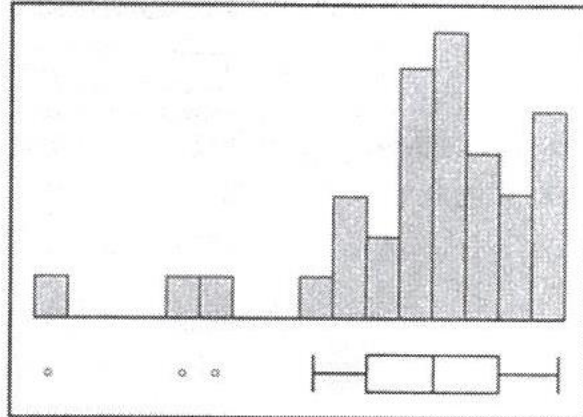
AP Statistics
Chapter 3 – Matching Plots to Variables

Example: Match each statement to the two graphs below.

- a. Age at death of a sample of 34 persons
- b. The last digit in the social number of each of 40 students



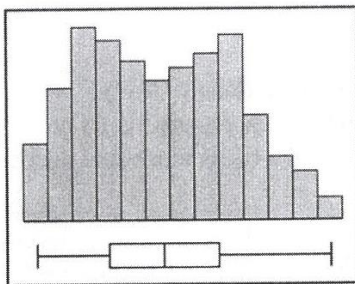
Graph 1



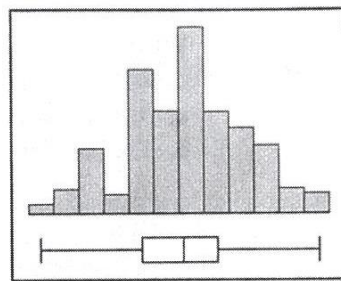
Graph 2

Part 1: Match the variables to the graphs below.

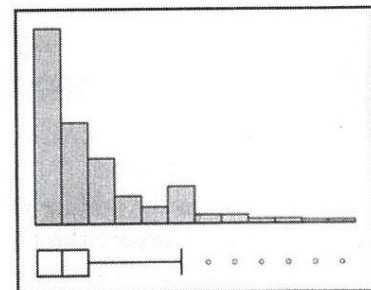
- A. Scores on a fairly easy examination in statistics
- B. Number of menstrual cycles required to achieve pregnancy for a sample of women who attempted to get pregnant
- C. Heights of a group of college students
- D. Numbers of medals won by medal-winning countries in the 2000 Sydney Olympics
- E. SAT scores for a group of college students



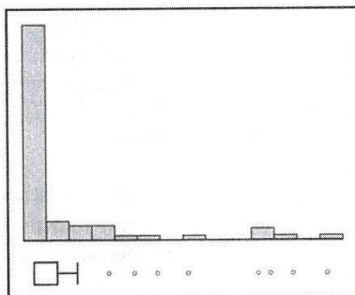
Graph 1



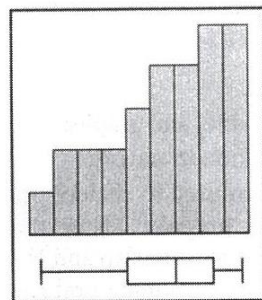
Graph 2



Graph 3



Graph 4



Graph 5

Part 2: Descriptions – List what words you would use to describe each graph. You do not need to write the complete descriptions.

Graph 1:

Graph 2:

Graph 3:

Graph 4:

Graph 5:

Part 3: Mean vs. Median – For each graph, determine if the mean is larger, smaller, or about the same as the median.

Graph 1:

Graph 2:

Graph 3:

Graph 4:

Graph 5:

Part 4: Naming – Name a variable that may have led to each histogram

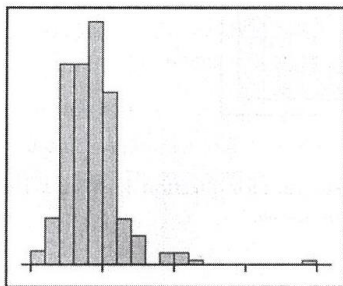


Figure 1

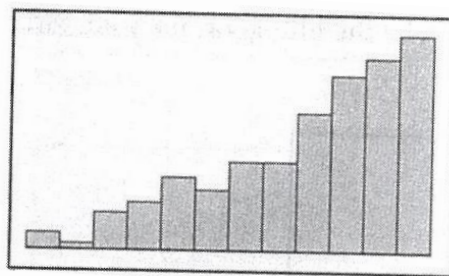


Figure 3